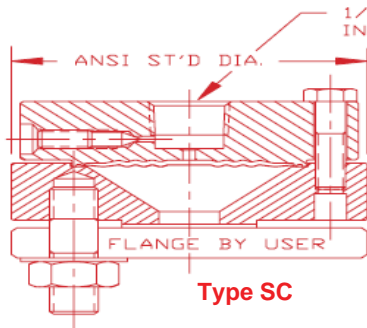




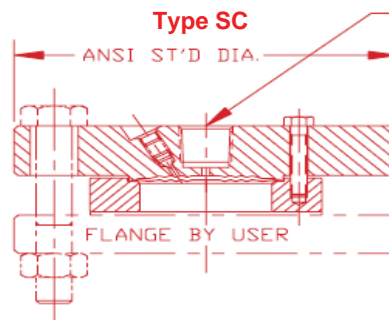
General Application Welded Metal Diaphragm Flanged Seal Types SC, SD, SR

Model Specific Information

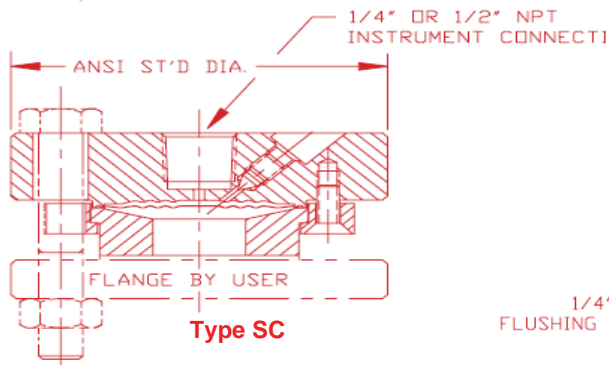
- ✓ **SC** models are **flange attached**.
- ✓ **SD** models are **flange attached** with **flushing connection**. Plugs for flushing connection are not supplied and must be ordered as parts.
- ✓ **SR** models are **special SC** flange attached seal with **Tantalum-cladded** (SST base metal) **lower housing** and **Tantalum diaphragm**. Pricing are on as quoted basis.
- ✓ For **socket weld (tubing)**, use **process connection size** (5th character) to indicate **tube diameter**.
- ✓ For **socket weld (pipe)**, use **process connection size** (5th character) and **schedule** (10th character) to indicate **pipe size**.
- ✓ **Non-metallic** exposed material are only available with process sizes **1" and greater** and **150#** and **300#** flange ratings.
- ✓ Note that **316SS bolting** may **not** offer sufficient strength for ANSI rated pressure.



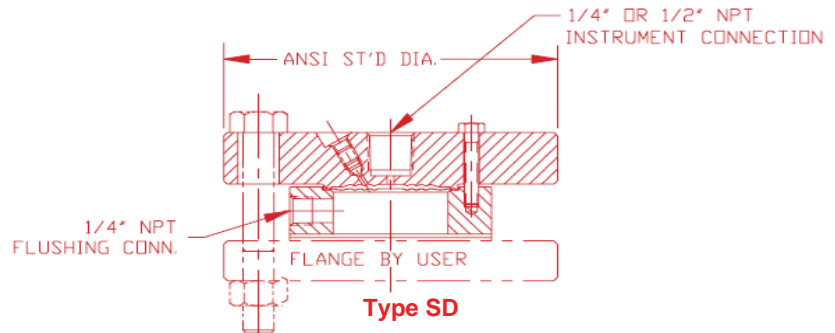
Type SC



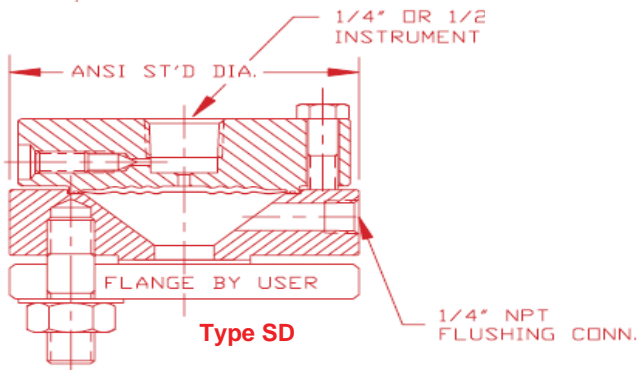
Type SC



Type SC



Type SD



Type SD

Flange styles may vary (i.e., use of mid-ring) depending on process size (see specification sheet for detail)



Master Gauge Co.



WHEN UNDER PRESSURE THINK OF US!